

Ready for Travel Beach Chair Cover-Up

Lounging poolside was never so stylish or comfortable! Make this easy-to-assemble chair cover-up with a pocket for your sunglasses, sunscreen, and your favorite book!

Created by: [Jan Page, Stitchin' Woman](#)

Supplies:

Baby Lock Sewing/Embroidery Machine - Esanté
Beach towel
1 yard of fabric for backing and pocket
2 yards of ribbon
Coordinating all-purpose thread

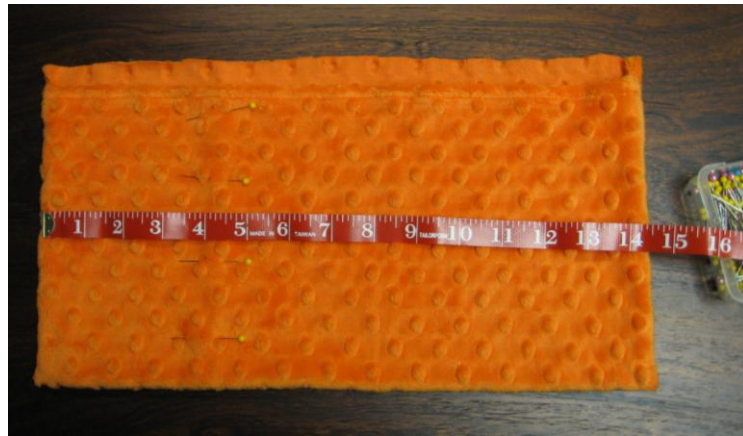


Instructions:

1. Measure across the short end of the towel. Cut a piece of fabric for the backing the same width and 21" long.
2. Hem the long edge of the fabric using $\frac{1}{2}$ " seam.
3. Cut your ribbon into 2 pieces that are each 36" long.
4. Fold your towel in half lengthwise. At the bottom of the towel, measure in 4" from each side of the folded towel and place a pin or mark with a water-soluble marker. Only do this on one folded side of the towel.
5. Open the towel and lay right side up. Fold each piece of ribbon in half. Pin the folded edge of ribbon at each mark at the end of the towel.
6. Lay the backing piece, on top of the towel right side together, with the hemmed edge towards the center of the towel. Pin across the top and down the sides of the backing.
7. To attach the backing to the towel, sew across the top of the towel and backing, catching folded edge of ribbon in the seam, using $\frac{1}{2}$ " seam allowance. Sew the sides of the backing to the towel using $\frac{1}{4}$ " to $\frac{1}{2}$ " seam allowance, depending on the edge of your towel.
8. From the remaining fabric, cut a 15"x15" piece.
9. Hem $\frac{1}{2}$ " on one side.
10. Fold hemmed side up 7" toward raw edge, right sides together. Sew the sides using $\frac{1}{2}$ " seam allowance. Trim seam to $\frac{1}{4}$ " and turn right side out.



11. Lay the pocket flat. Measure 4" from one side of the long pocket. Mark in several spots along the measurement line with a water-soluble pen. Pin at the marks and sew from the hemmed edge to the bottom, creating a smaller pocket.



12. Lay pocket right side up and pin hemmed edge away from unfinished edge. This will help keep it out of the way as you sew the pocket to the towel.



13. Lay the towel out flat, right side up, on a flat surface. Measure 12" from the bottom edge of the backing that you attached to the top of the towel. Mark using a straight pin.

14. Lay the unfinished edge of the pocket along the edge of the towel with the right sides together; matching the end of the pocket to the pin you just placed. Pin the pocket along the edge.
15. Sew the pocket into place, being careful not to catch in the top edge of the pocket.
16. Remove any stray pins and you're ready to hit the beach!

To Fold Your Cover-Up:

1. Fold towel in half lengthwise.
2. Fold it again the other direction.
3. Roll up, starting at the folded edge.
4. Tie with the ribbons and you're ready to go!

Additional Notes:

- You could easily use 2 towels for this project. Cut your backing 21" long and hem the edge. Sew along the top and sides. Use the remainder of the towel for your pocket.
- Put pockets on both sides for lots of storage space!
- If the hem on the top of your towel is bulky, cut it off before you sew on your backing. Since terrycloth ravel; zig-zag or serge the edge to prevent this.
- Match the top thread and the bobbin thread to the colors you are using. Bobbin thread and top threads don't have to match each other!

